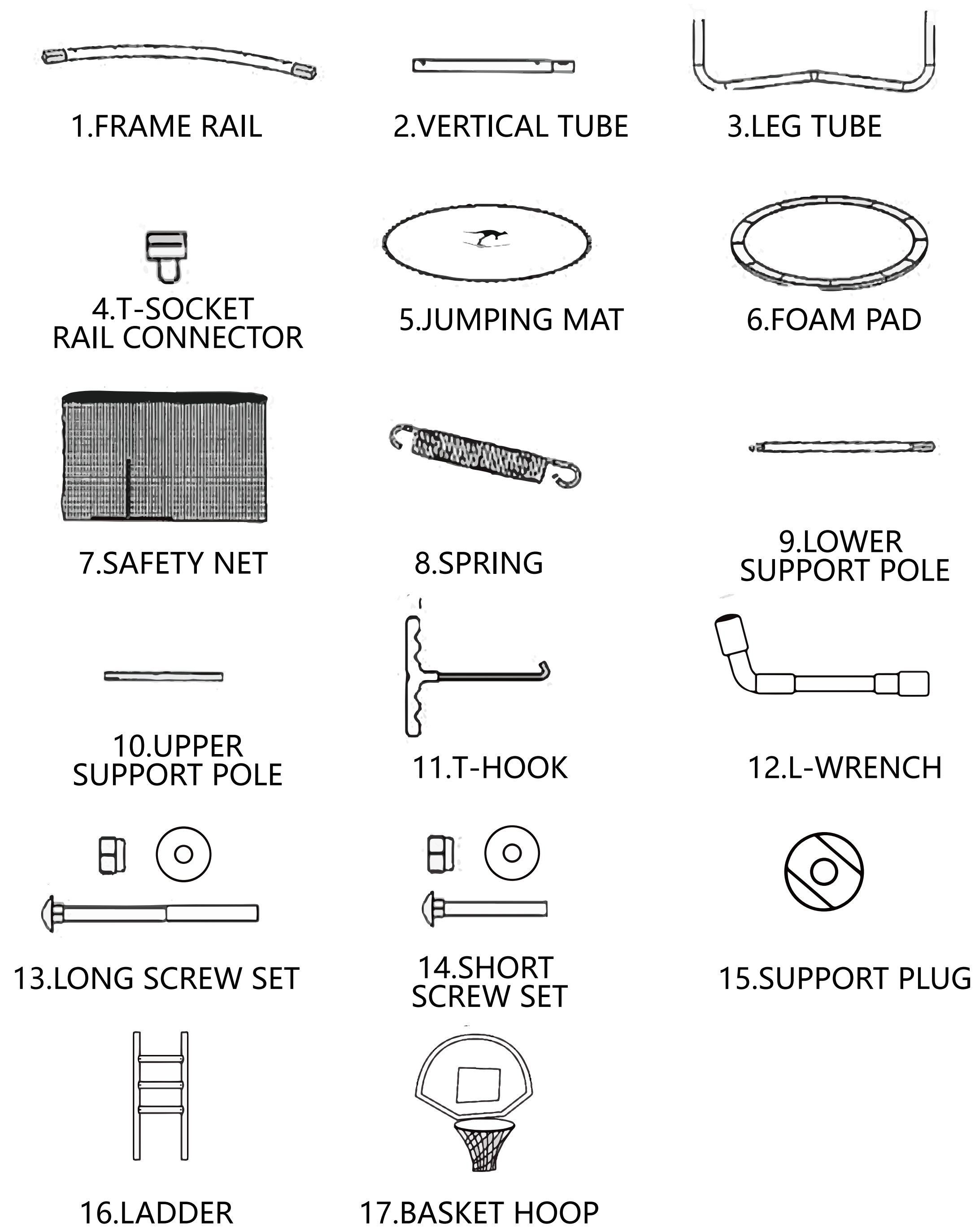


Trampoline Assembly Instructions

Part Identification Chart

Please note : the numbers are used in the installation process



PARTS LIST:

If any parts are missing, please CONTACT US immediately at support@kangarohoppers.com

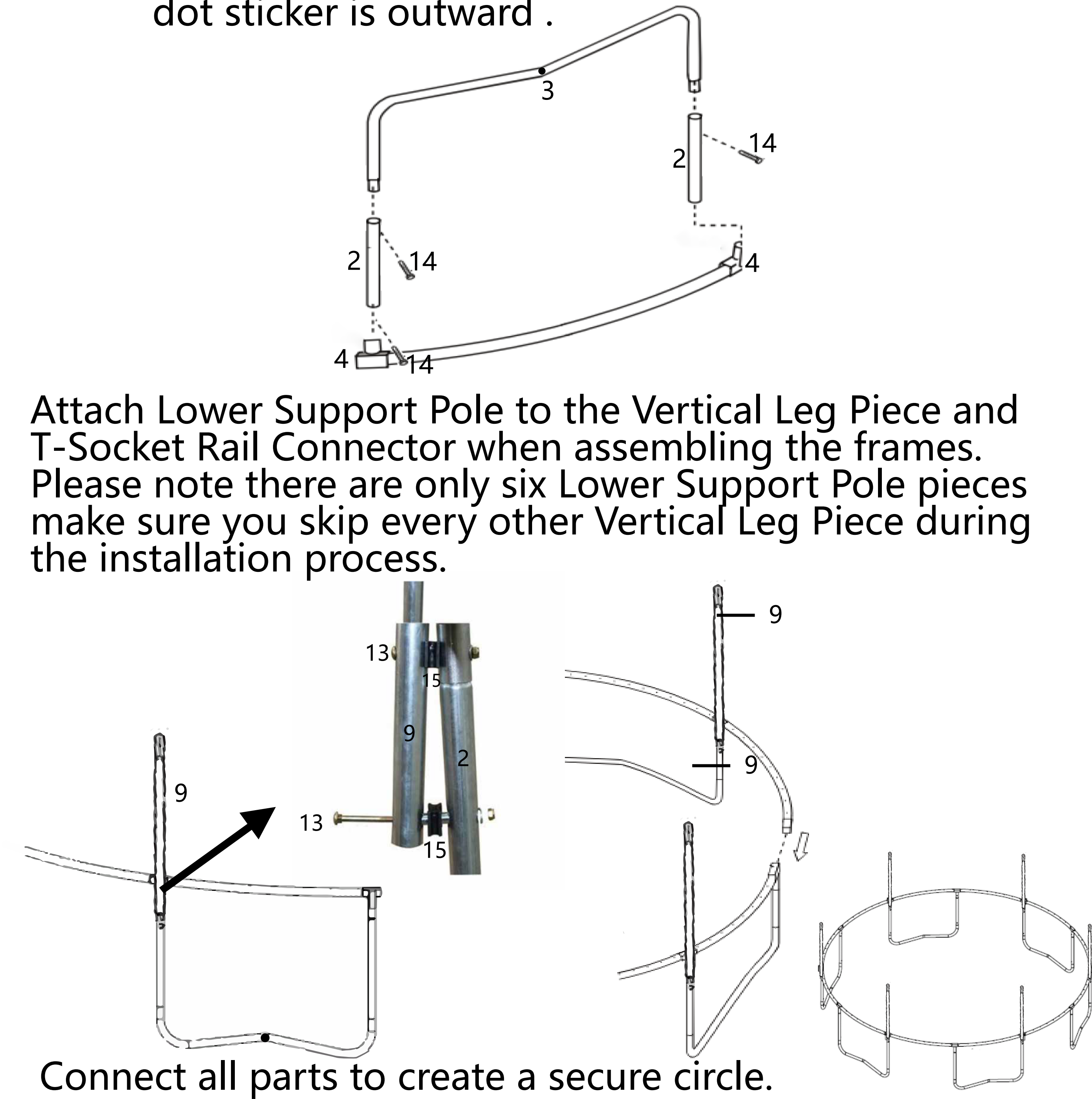
12/14/15 FEET TRAMPOLINE PARTS LIST

| Reference # | Description | Quantity |
|-------------|-------------------------------|---------------|
| 1 | FRAME RAIL | 12PCS |
| 2 | VERTICAL TUBE | 12 PCS |
| 3 | LEG TUBE | 6 PCS |
| 4 | T-SOCKET RAIL CONNECTOR | 12 PCS |
| 5 | JUMPING MAT | 1 PC |
| 6 | FOAM PAD | 1 PC |
| 7 | SAFETY NET | 1 PC |
| 8 | SPRING(12FEET/14FEET/15FEET) | 72/96/108 PCS |
| 9 | LOWER SUPPORT POLE | 6 PCS |
| 10 | UPPER SUPPORT POLE | 6 PCS |
| 11 | T-HOOK | 2 PCS |
| 12 | L-WRENCH | 2 PCS |
| 13 | LONG SCREW SET | 12 SETS |
| 14 | SHORT SCREW SET | 18 SETS |
| 15 | SUPPORT PLUG | 12 SETS |
| 16 | LADDER | 1 SET |
| 17 | BASKETBALL HOOP AND ACCESSORY | 1 BOX |
| | USER MANUAL | 1 PC |
| | GLOVES | 2 PAIRS |

STEP 1: TRAMPOLINE FRAME ASSEMBLY

Prepare Leg Tube,Vertical Leg Piece,Frame Rail,T-Socket Rail Connector to build a leg assembly as shown below. Repeat above assembly steps for all frame pieces.

NOTE : make sure the side of the leg tube marked by a black dot sticker is outward .

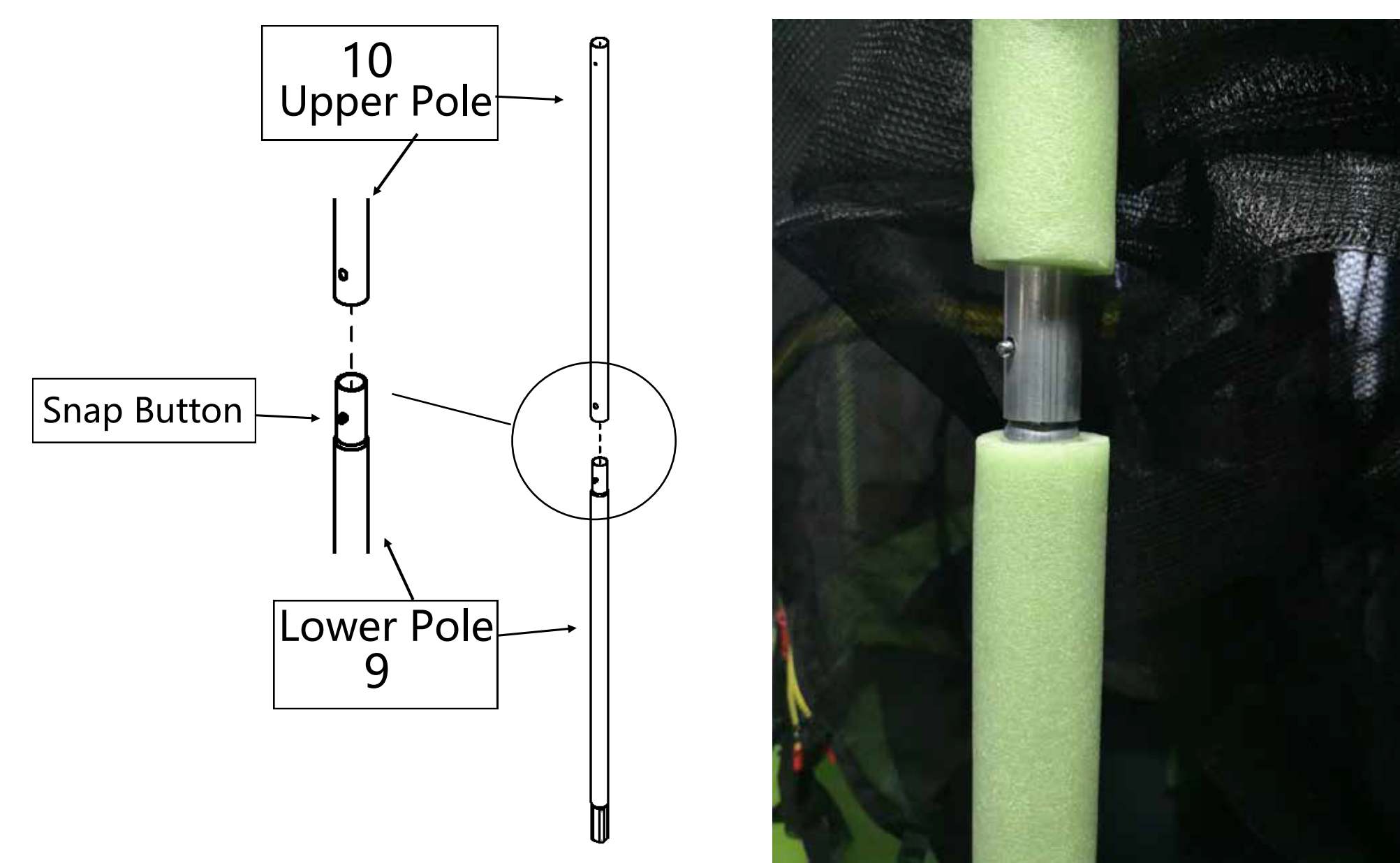


STEP 4: TRAMPOLINE NET ASSEMBLY

Insert the upper support pole into the safety net one by one like the picture below.

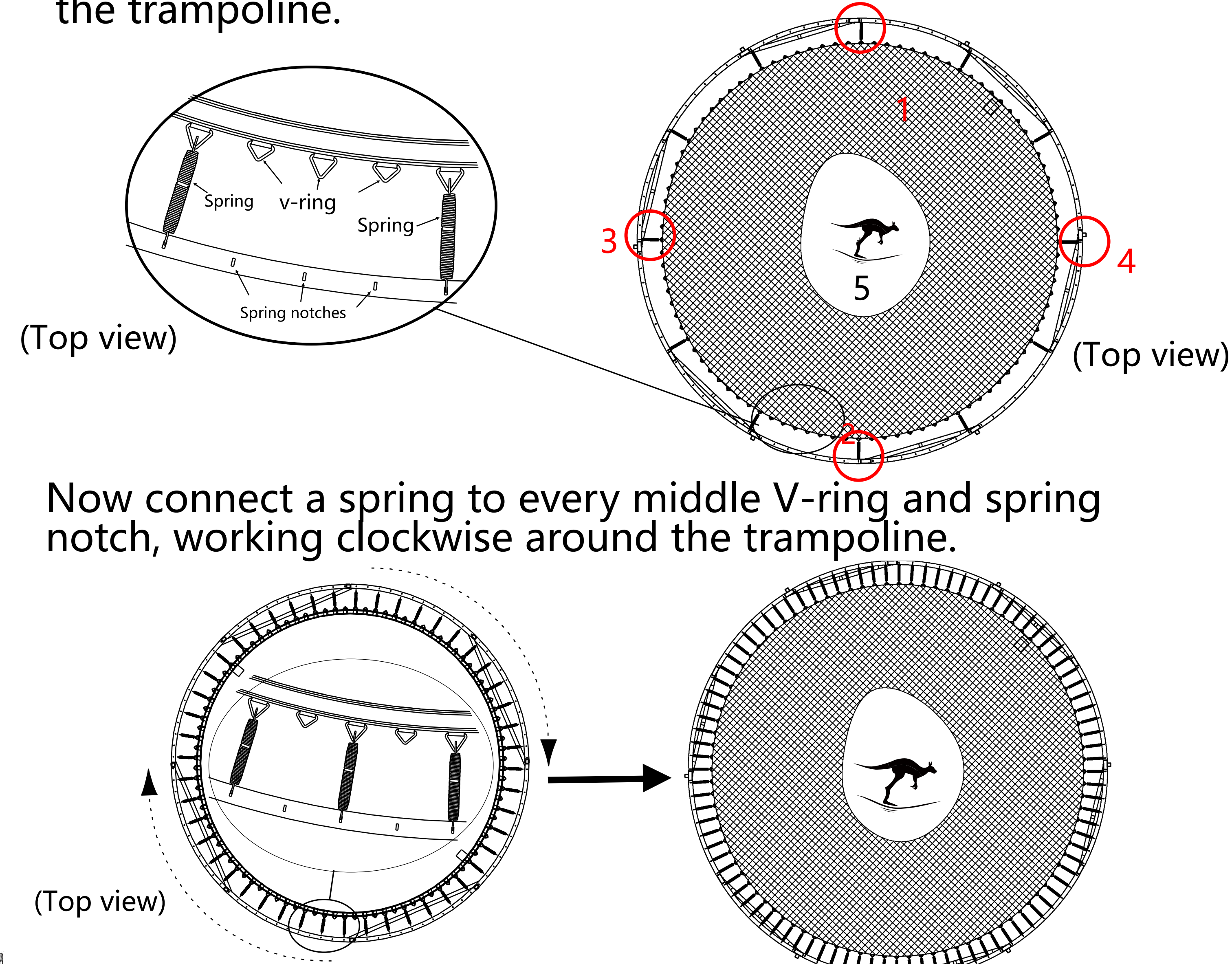


Connect the lower pole piece to the upper pole piece to create an enclosure pole assembly. The lower pole has a round end with snap button, which connects to the upper pole.



STEP 2: TRAMPOLINE MAT ASSEMBLY

Start at a random point as your point 1, using a spring to connect the mat and the frame, and then find your point 2,3,4 as shown in the picture below. Once these four points are done, then count 4 v-rings and start connect the rest of the springs clockwise until you have gone all the way around the trampoline.

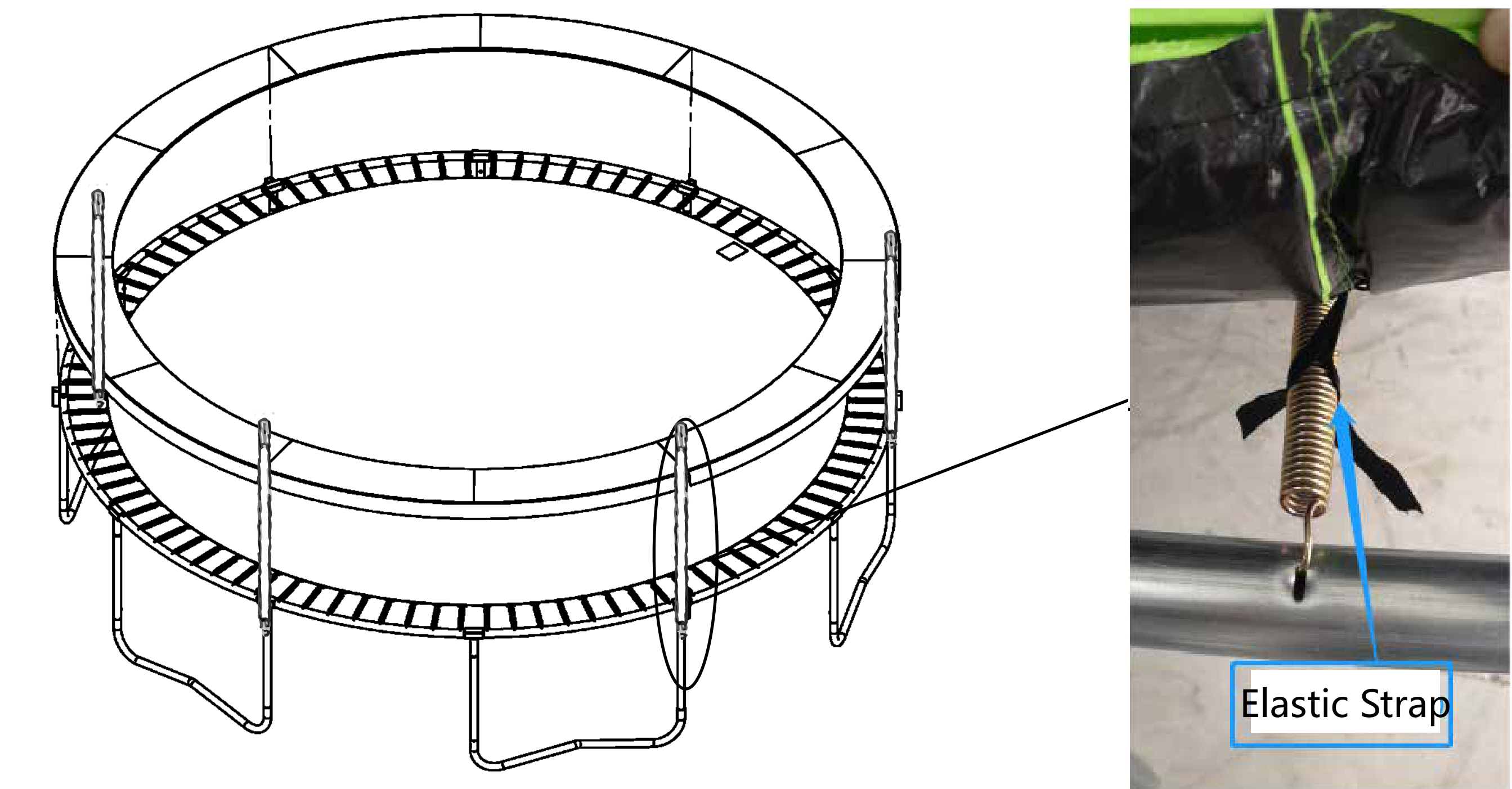


NOTE: Attach the springs by using the T-HOOK (11)

CAUTION: Please watch your fingers! Two adults may be required for this part of the assembly.

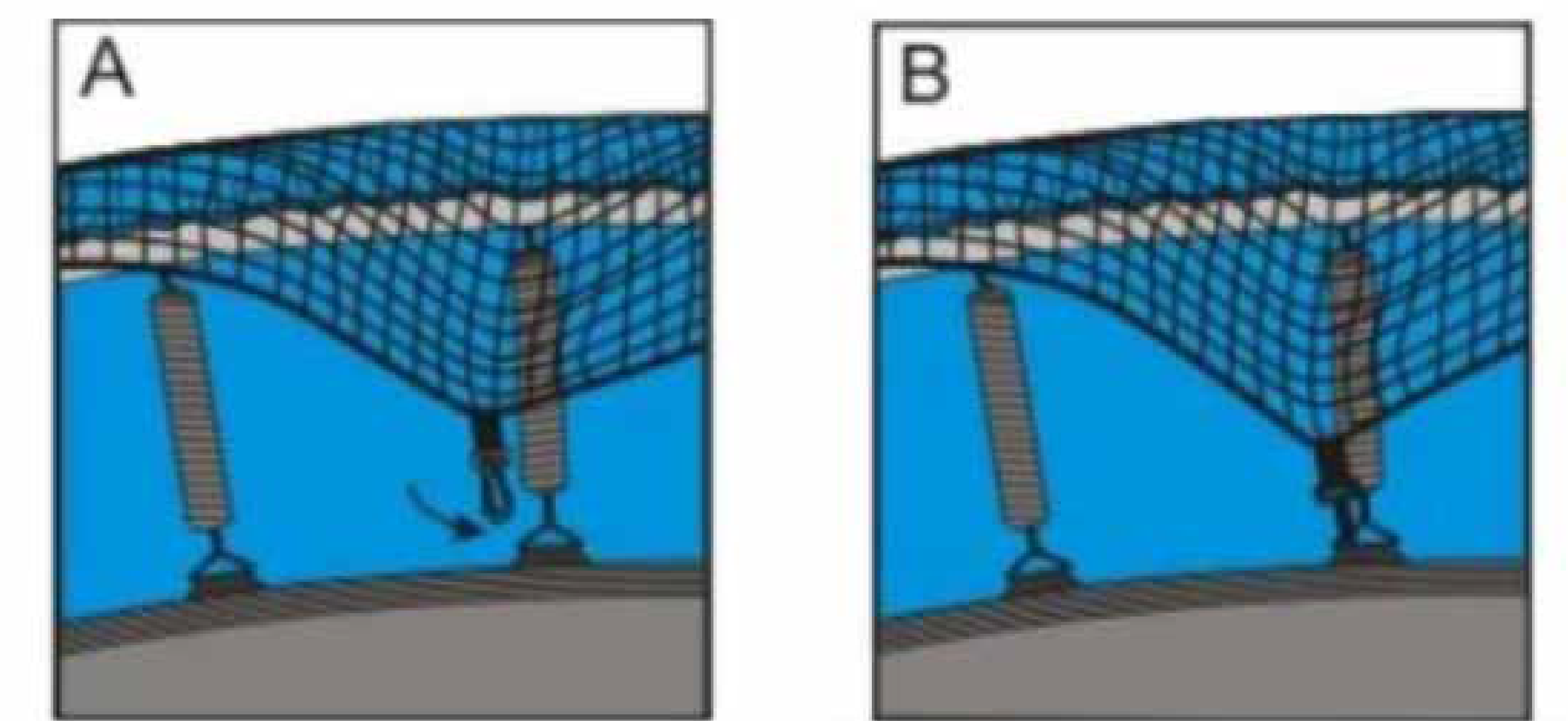
STEP 3: TRAMPOLINE FOAM PAD ASSEMBLY

Lay the frame pad on the trampoline so that it covers all the springs and the edges of the frame. Locate the elastic straps which are sewn to the underside of the frame pad. Connect the pad to the spring by tying the elastic straps around the spring as shown.



Work with someone in this step. Having one person hold the upper support pole with safety net from the inside of the trampoline while the other person pulling the safety net down to cover the lower support pole from outside.

Clip the carabiner to the V-ring as shown below to secure the net.



Congratulations, your trampoline and enclosure is now complete.

